



**FITTING INSTRUCTIONS FOR ECC0249BK FOR SUZUKI GSX S+R 2017 LHS ENGINE CASE COVER**



**THIS KIT CONTAINS THE ITEMS PICTURED AND LABELLED BELOW.  
DO NOT PROCEED UNTIL YOU ARE SURE ALL PARTS ARE PRESENT.**

**Please note that the way the kit is packed does not necessarily represent the way of mounting to the bike**

Please note that in cases where kits are packed with rubber washers holding the components onto the bolt – *the rubber washers should be thrown away!*

THE PARTS SHOWN MAY BE REPRESENTATIVE ONLY (FOR CLARITY OF INSTRUCTIONS ONLY)

**Digital copies of these instructions are available to download from [www.rg-racing.com](http://www.rg-racing.com)**

**GENERAL TORQUE SETTINGS**

- M4 BOLT = 8Nm
- M5 BOLT = 12Nm
- M6 BOLT = 15Nm
- M8 BOLT = 20Nm
- M10 BOLT = 40Nm

**TOOLS REQUIRED**

- Allen key set to include 4 and 5mm allen keys
- Ratchet set to include 8mm and 10mm sockets
- Phillips Screwdriver

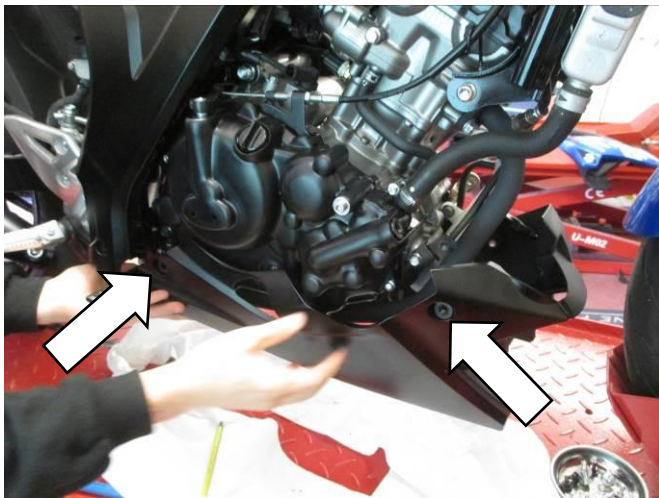
R&G

Unit 1, Shelley's Lane, East Worldham, Alton, Hampshire, GU34 3AQ

Tel: +44 (0)1420 89007 Fax: +44 (0)1420 87301 [www.rg-racing.com](http://www.rg-racing.com) Email: [info@rg-racing.com](mailto:info@rg-racing.com)

**This Kit Contains:**

- Item 1 = PC0249 ISSUE 2
- Item 2 = 3 x M6 x 50mm CAP HEAD BOLT STAINLESS
- Item 3 = 1 x M6 x 35mm BUTTON HEAD BOLT STAINLESS
- Item 4 = 1 x M6 x 19mm WASHER
- Item 5 = 1 x S0779 SPACER (REAR L/H CHIN FAIRING SPACER)
- Item 6 = 3 x S0820 SPACERS
- Item 7 = 3 x M6 WASHER 14mm
- Item 8 = 2 x RGS001 STICKER



Picture 1



Picture 2



Picture 3

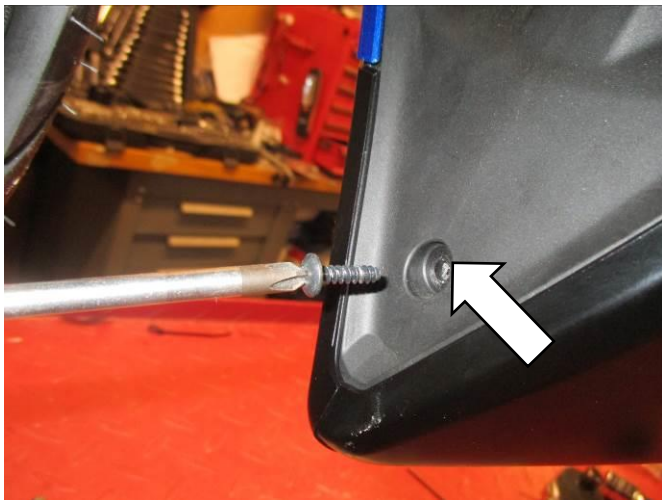


Picture 4

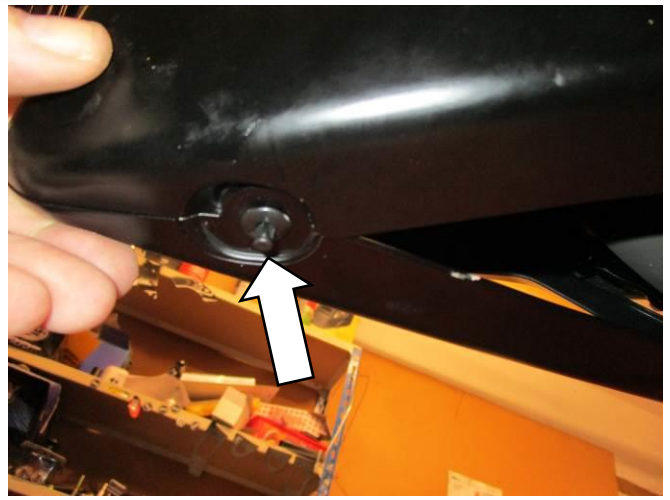
R&amp;G

Unit 1, Shelley's Lane, East Worldham, Alton, Hampshire, GU34 3AQ

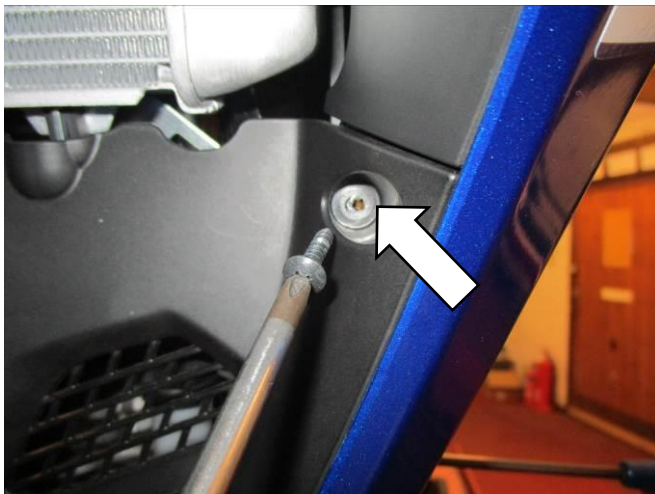
Tel: +44 (0)1420 89007 Fax: +44 (0)1420 87301 [www.rg-racing.com](http://www.rg-racing.com) Email: [info@rg-racing.com](mailto:info@rg-racing.com)



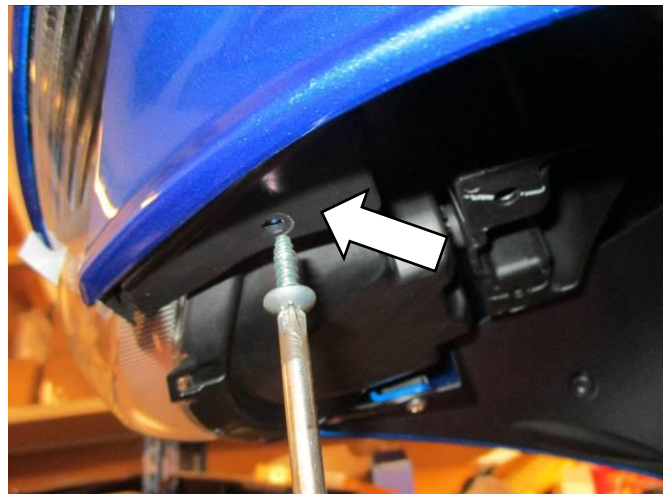
Picture 5



Picture 6



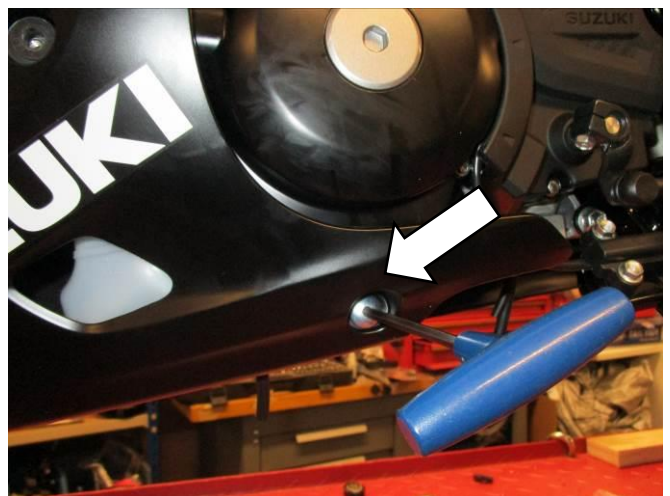
Picture 7



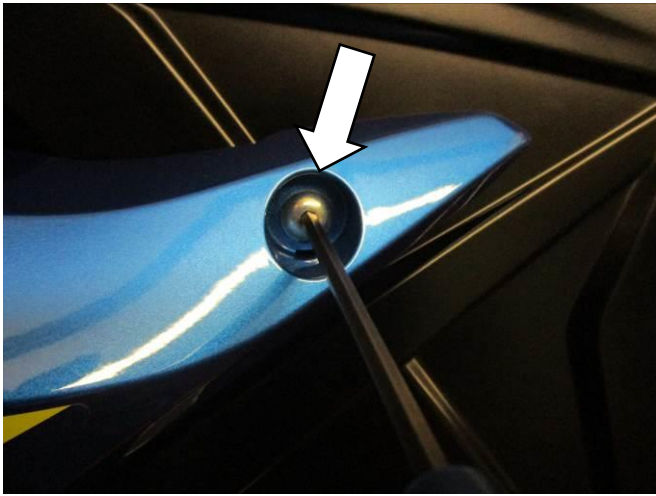
Picture 8



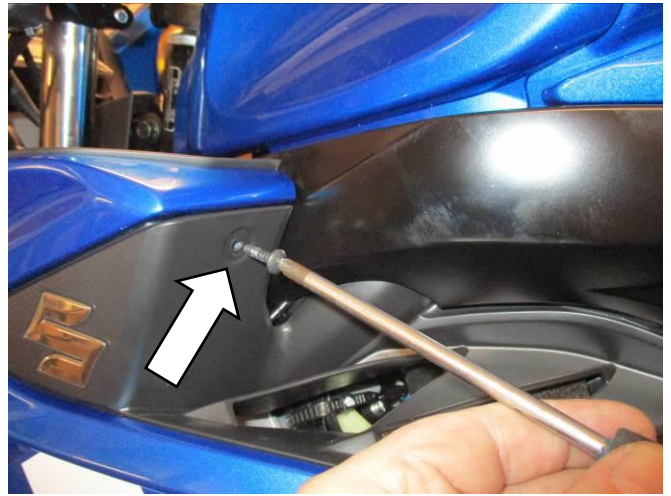
Picture 9



Picture 10



Picture 11



Picture 12



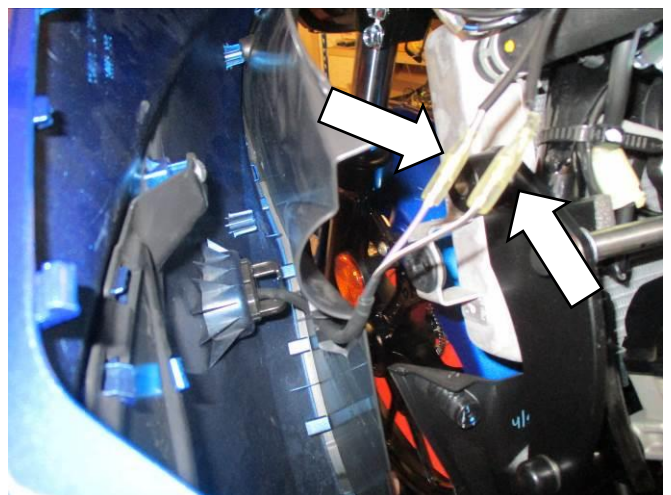
Picture 13



Picture 14



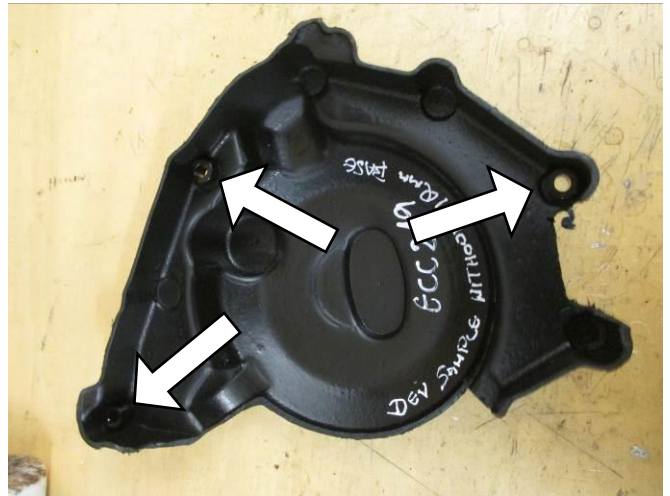
Picture 15



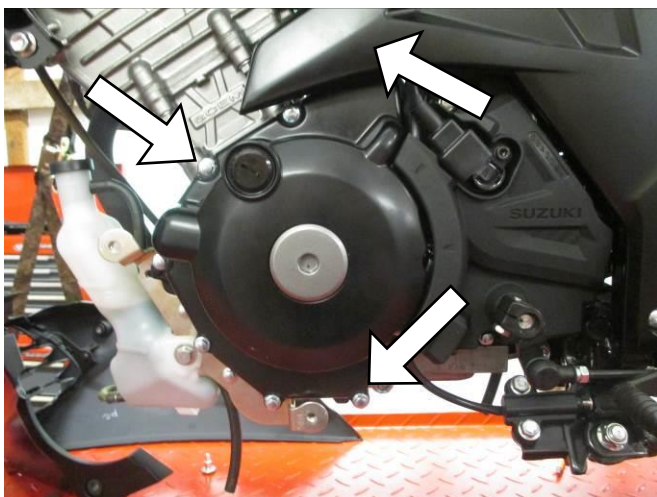
Picture 16



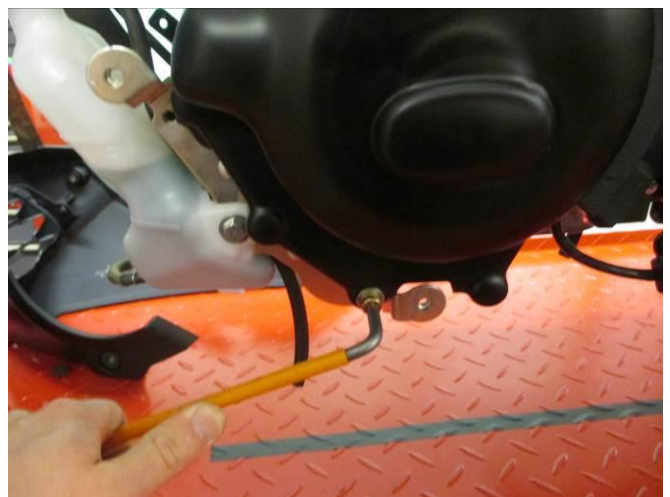
Picture 17



Picture 18



Picture 19



Picture 20



Picture 21



Picture 22



## **FITTING INSTRUCTIONS**

### **GSX-S Models**

- On GSX-S Models the chin fairing must be removed, to do this remove the 4 x Allen head bolts that secure the plastic to the bike as arrowed in picture 1 and remove the fairing piece from the bike.
- Next the upper fairing piece must be removed. This is done by removing 2 x Allen bolts from the upper and lower mounts shown in pictures 2 and 3
- With the panel now loose, you will be able to pull the fairing gently away from the bike as shown in picture 4, releasing it from 2 x rubber grommets found on the upper/front and lower/rear section of the panel.

### **GSX-R Models**

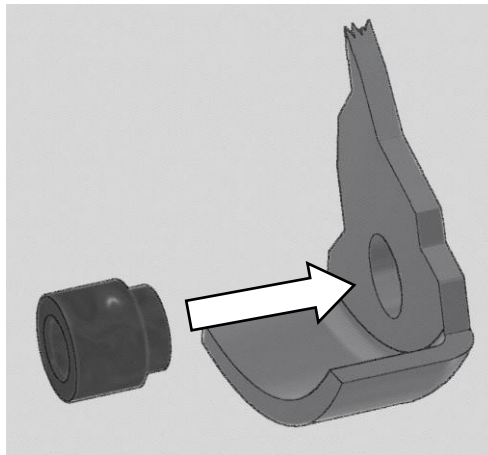
- To fit the ECC the left side fairing panel must be removed.
- Remove the bolts and push rivets arrowed in Pictures 5, 6, 7, 8, 9, 10, 11, 12, 13, 14, 15.
- Carefully remove the left-hand side fairing and disconnect the indicator plug sockets as arrowed in picture 16.

### **For Both Models**

- After removing the fairing this will reveal the black frame cover panel, this needs to be loosened by removing the mid and lower bolts shown in picture 17. You can now carefully pull the panel away from the bike enough to fit the engine case cover without removing this frame cover completely.

### **Assembly**

- To assemble the engine case cover, take the 3 x S0820 spacers (item 6) and push them into the 3 holes on the rear of the cover as shown in picture 18. It may help to position these and use a bar and soft hammer to push these into place as seen below. Ensure these are seated correctly before proceeding.



- Remove the three bolts arrowed in picture 19. The top bolt is located behind the frame cover which can now be pulled away from the bike for access.
- With the spacers in place the R&G engine cover can now be pushed into place over the engine. With the cover aligned push the cover and flex over any tight spots, a swift tap with a soft mallet or palm of the hand may be required.
- With the cover fitted correctly, use the 3 x cap head bolts (item 2) with M6 washers (item 7) to loosely fix the cover to the bike as shown in picture.20
- Now use a torque wrench to tighten the bolts to 10 Nm (7Lb ft)

R&G

Unit 1, Shelley's Lane, East Worldham, Alton, Hampshire, GU34 3AQ

Tel: +44 (0)1420 89007 Fax: +44 (0)1420 87301 [www.rg-racing.com](http://www.rg-racing.com) Email: [info@rg-racing.com](mailto:info@rg-racing.com)



- To keep the fairing or belly pan from touching the engine case cover, use the spacer S0779 behind the plastic in the mount arrowed in picture 21
- To fix this spacer use the 35mm button head bolt (item 3) and the 19mm spacer (item 4) as shown in picture 22.
- The fairings and plastics can be refitted to the bike in the same order they were removed.
- Ensure all fairings are secure and bolts tightened to the recommended torque before riding.
- It is suggested that you check the tightness of the mounting bolts on a regular basis i.e. when cleaning or once a month
- NOTE for the cleaning of this product you should only use a soft polishing cloth and a mild general cleaning agent.
- AVOID HARMFUL CHEMICALS. IF IN DOUBT DO NOT USE AS THEY COULD ALTER THE STRENGTH OF THE COVER.
- R&G will accept no liability if the above procedure and torque settings are not followed.

ISSUE 1 29/10/2018 (DM)

#### CONSUMER NOTICE

The catalogue description and any exhibition of samples are only broad indications of the Products and R&G may make design changes which do not diminish their performance or visual appeal and supplying them in such state shall conform to the order. The Buyer acknowledges no representation or warranty (other than as to title) has been given or will apply to the Products other than those in R&G's order or confirmation and the Buyer confirms it has chosen the Products as being of merchantable quality and suitable for its particular purposes. Where R&G fits the Products or undertakes other services it shall exercise reasonable skill and care and rectify any fault free of charge unless the workmanship has been disturbed. The Buyer is responsible for ensuring that the warranty on the motorcycle is not affected by the fitting of the Products. On return of any defective Products R&G shall at its option either supply a replacement or refund the purchase money but shall not be liable if the Products have been modified or used or maintained otherwise than in accordance with R&G's or manufacturer's instructions and good engineering practice or if the defect arises from accident or neglect. Other than identified above and subject to R&G not limiting its liability for causing death and personal injury, it shall not be liable for indirect or consequential loss and otherwise its liability shall be limited to the amounts paid by the Buyer for the Products or the fitting or service concerned. These terms do not affect the Buyer's statutory rights.

#### R&G RETURNS POLICY (NON-FAULTY GOODS)

Returns must be pre-authorized (if not pre-authorized the return will be rejected). Goods may only be returned direct to us if they were purchased direct from us (customer must prove if necessary). Otherwise to be returned to original vendor. Goods must be in re-sellable condition, in the opinion of R&G. All returns are subject to a 25% restocking and handling fee (25% of the gross value exc. P&P – at the prevailing price at time of purchase). The customer must pay any and all carriage charges. No returns of discontinued products, unless within 14 days of purchase. This policy does not affect your statutory rights and does not refer to faulty goods.

R&G

Unit 1, Shelley's Lane, East Worldham, Alton, Hampshire, GU34 3AQ

Tel: +44 (0)1420 89007 Fax: +44 (0)1420 87301 [www.rg-racing.com](http://www.rg-racing.com) Email: [info@rg-racing.com](mailto:info@rg-racing.com)



**NOTICE DE MONTAGE POUR ECC0249BK POUR SUZUKI GSX S+R 2017**  
**PROTECTION CARTER CÔTÉ GAUCHE**



**Le kit contient les articles exposés ci-dessous, vérifier que toutes les pièces soient présentes avant de procéder au montage.**

**La façon dont le kit est emballé ne correspond pas forcément à la façon de monter les pièces sur la moto.**

**LES PARTIES PRÉSENTÉES PEUVENT ÊTRE UNIQUEMENT REPRESENTATIVES (POUR LA CLARTE DES INSTRUCTIONS UNIQUEMENT)**

**Notice disponible au téléchargement sur [www.rg-racing.com](http://www.rg-racing.com)**

**VALEURS DE SERRAGE RECOMMANDÉES**

**M4 BOULON = 8Nm**

**M5 BOULON = 12Nm**

**M6 BOULON = 15Nm**

**M8 BOULON = 20Nm**

**M10 BOULON = 40Nm**

**OUTILS REQUIS**

Clés Allen 4 et 5mm

Clés à cliquet 8mm et 10mm

Tournevis cruciforme

R&G

Unit 1, Shelley's Lane, East Worldham, Alton, Hampshire, GU34 3AQ

Tel: +44 (0)1420 89007 Fax: +44 (0)1420 87301 [www.rg-racing.com](http://www.rg-racing.com) Email: [info@rg-racing.com](mailto:info@rg-racing.com)



**LE KIT CONTIENT :**

- Article 1 = PC0249 VERSION 2
- Article 2 = 3 x M6 x 50mm BOULON INOXYDABLE
- Article 3 = 1 x M6 x 35mm BOULON INOXYDABLE
- Article 4 = 1 x M6 x 19mm RONDELLE
- Article 5 = 1 x S0779 ENTRETOISE (ENTRETOISE DE CARÉNAGE ARRIÈRE GAUCHE)
- Article 6 = 3 x S0820 ENTRETOISES
- Article 7 = 3 x M6 RONDELLE 14mm
- Article 8 = 2 x RGS001 STICKER

**NOTICE DE MONTAGE****Modèles GSX-S**

- Sur le modèle GSX-S, le carénage avant doit être enlevé, pour cela enlever les 4 boulons qui fixent le plastique à la moto comme sur la photo 1 puis enlever la pièce de carénage de la moto.
- Ensuite, la pièce de carénage supérieure doit être enlevée. Cela s'effectue en enlevant les 2 boulons des supports supérieurs et inférieurs, voir photos 2 et 3
- Une fois le carénage desserré, vous pourrez tirer le carénage de la moto, voir photo 4, le libérant des 2 rondelles de caoutchouc situées sur la section supérieure/avant et inférieure/arrière du panneau.

**Modèles GSX-R**

- Pour monter la protection, le carénage gauche doit être enlevé.
- Enlever les boulons et rivets, voir photos 5, 6, 7, 8, 9, 10, 11, 12, 13, 14, 15.
- Enlever le carénage gauche et déconnecter les prises de clignotant, voir photo 16.

**Pour les 2 modèles**

- Après avoir retiré le carénage, le panneau noir de cadre sera visible et devra être desserré en enlevant les boulons inférieurs et intermédiaires, voir photo 17. Vous pouvez à présent tirer suffisamment le panneau pour monter la protection carter moteur sans enlever ce cadre complètement.

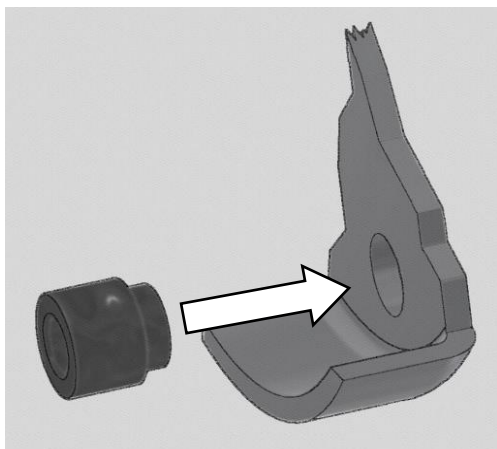
**Assemblage**

- Pour assembler la protection carter moteur, prendre les 3 entretoises S0820 (article 6) puis poussez les dans les 3 trous à l'arrière du cache, voir photo 18, pour faciliter leur positionnement. Ensuite, utiliser une barre ainsi qu'un maillet pour les pousser en place comme ci-dessous. Veiller à ce qu'elles soient correctement placées avant de procéder.

R&amp;G

Unit 1, Shelley's Lane, East Worldham, Alton, Hampshire, GU34 3AQ

Tel: +44 (0)1420 89007 Fax: +44 (0)1420 87301 [www.rg-racing.com](http://www.rg-racing.com) Email: [info@rg-racing.com](mailto:info@rg-racing.com)



- Enlever les 3 boulons, voir photo 19. Le boulon du haut est placé derrière le cache cadre qui peut à présent être tiré de la moto pour libérer l'accès.
  - Une fois les entretoises en place, la protection R&G peut maintenant être mise en place sur le moteur. Une fois le cache aligné, poussez le cache et pliez-le sur les endroits exigus. Pour aider, vous pouvez tapoter avec la paume de la main ou à l'aide d'un maillet doux.
  - Une fois le cache monté correctement, utiliser 3 boulons (article 2) avec rondelles M6 (article 7) pour serrer légèrement le cache sur la moto, voir photo 20.
  - Utiliser une clé dynamométrique pour serrer les boulons à 10 Nm (7Lb ft)
- 
- Pour éviter au carénage de toucher la protection carter moteur, utiliser l'entretoise S0779 derrière le plastique sur le support, voir photo 21.
  - Pour serrer cette entretoise, utiliser le boulon 35mm (article 3) et l'entretoise 19mm (article 4) voir photo 22.
  - Les carénages et plastiques peuvent être remontés sur la moto de la même façon qu'ils ont été retirés.
  - Veiller à ce que les carénages et boulons soient serrés selon les valeurs de serrage recommandées avant de prendre la route.
  - Nous vous suggérons de vérifier le serrage au moins une fois par mois, lors du nettoyage par exemple.
  - NOTE : Pour le nettoyage, vous devriez utiliser uniquement un chiffon doux et un agent nettoyant doux.
  - Ne pas utiliser d'agents chimiques qui pourraient altérer l'efficacité de la protection.
  - R&G n'acceptera aucune responsabilité en cas de non-respect de la procédure énoncée ci-dessus, ou si les valeurs de serrage recommandées ne sont pas respectées.

ISSUE 1 29/10/2018 (DM)

R&G

Unit 1, Shelley's Lane, East Worldham, Alton, Hampshire, GU34 3AQ

Tel: +44 (0)1420 89007 Fax: +44 (0)1420 87301 [www.rg-racing.com](http://www.rg-racing.com) Email: [info@rg-racing.com](mailto:info@rg-racing.com)

**CONSUMER NOTICE**

The catalogue description and any exhibition of samples are only broad indications of the Products and R&G may make design changes which do not diminish their performance or visual appeal and supplying them in such state shall conform to the order. The Buyer acknowledges no representation or warranty (other than as to title) has been given or will apply to the Products other than those in R&G's order or confirmation and the Buyer confirms it has chosen the Products as being of merchantable quality and suitable for its particular purposes. Where R&G fits the Products or undertakes other services it shall exercise reasonable skill and care and rectify any fault free of charge unless the workmanship has been disturbed. The Buyer is responsible for ensuring that the warranty on the motorcycle is not affected by the fitting of the Products. On return of any defective Products R&G shall at its option either supply a replacement or refund the purchase money but shall not be liable if the Products have been modified or used or maintained otherwise than in accordance with R&G's or manufacturer's instructions and good engineering practice or if the defect arises from accident or neglect. Other than identified above and subject to R&G not limiting its liability for causing death and personal injury, it shall not be liable for indirect or consequential loss and otherwise its liability shall be limited to the amounts paid by the Buyer for the Products or the fitting or service concerned. These terms do not affect the Buyer's statutory rights.

**R&G RETURNS POLICY (NON-FAULTY GOODS)**

Returns must be pre-authorized (if not pre-authorized the return will be rejected). Goods may only be returned direct to us if they were purchased direct from us (customer must prove if necessary). Otherwise to be returned to original vendor. Goods must be in re-sellable condition, in the opinion of R&G. All returns are subject to a 25% restocking and handling fee (25% of the gross value exc. P&P – at the prevailing price at time of purchase). The customer must pay any and all carriage charges. No returns of discontinued products, unless within 14 days of purchase. This policy does not affect your statutory rights and does not refer to faulty goods.

R&amp;G

Unit 1, Shelley's Lane, East Worldham, Alton, Hampshire, GU34 3AQ

Tel: +44 (0)1420 89007 Fax: +44 (0)1420 87301 [www.rg-racing.com](http://www.rg-racing.com) Email: [info@rg-racing.com](mailto:info@rg-racing.com)



**MONTAGEANLEITUNG FÜR ECC0249BK**  
**SUZUKI GSX S+R 2017 MOTORGEHÄUSE-ABDECKUNG (LINKS)**



**ALLE KIT-TEILE SIND UNTEN ABGEBILDET UND GEKENNZEICHNET. BEVOR SIE MIT DER MONTAGE BEGINNEN, ÜBERPRÜFEN SIE, DASS ALLE TEILE VORHANDEN SIND.**

**Hinweis:** Die Verpackung der Teile stellt nicht die Reihenfolge der Montage dar.

Hinweis für Kits mit Plastikunterlegscheiben an den Schrauben – *Diese Plastikunterlegscheiben werden nicht für den Einbau benötigt!*

DIE UNTEN ABGEBILDETEN TEILE DIENEN LEDIGLICH ZUR ERKLÄRUNG

**Eine digitale Version dieser Montageanleitung kann auf folgender Seite heruntergeladen werden: [www.rg-racing.com](http://www.rg-racing.com)**

**ANZUGSDREHMOMENT**

M4 SCHRAUBE = 8Nm

M5 SCHRAUBE = 12Nm

M6 SCHRAUBE = 15Nm

M8 SCHRAUBE = 20Nm

M10 SCHRAUBE = 40Nm

**SIE BENÖTIGEN FOLGENDES WERKZEUG**

Satz Inbusschlüssel mit 4 und 5mm Inbusschlüssel  
Steckschlüsselsatz mit 8mm und 10mm Steckschlüssel  
Kreuzschlitzschraubenzieher

R&G

Unit 1, Shelley's Lane, East Worldham, Alton, Hampshire, GU34 3AQ

Tel: +44 (0)1420 89007 Fax: +44 (0)1420 87301 [www.rg-racing.com](http://www.rg-racing.com) Email: [info@rg-racing.com](mailto:info@rg-racing.com)

**Inhalt des Kits:**

- Artikel 1 = PC0249 AUSGABE 2
- Artikel 2 = 3 x M6 x 50mm INBUSSCHRAUBE
- Artikel 3 = 1 x M6 x 35mm INBUSSCHRAUBE
- Artikel 4 = 1 x M6 x 19mm UNTERLEGSCHNEIBE
- Artikel 5 = 1 x S0779 DISTANZHALTER (HINTERE VERKLEIDUNG LINKS)
- Artikel 6 = 3 x S0820 DISTANZHALTER
- Artikel 7 = 3 x M6 UNTERLEGSCHNEIBE 14mm
- Artikel 8 = 2 x RGS001 AUFKLEBER

**MONTAGEANLEITUNG****GSX-S Modelle**

- Bei GSX-S Modellen muss das untere Verkleidungsteil entfernt werden: Entfernen Sie die 4 x Inbusschrauben, die das untere Verkleidungsteil am Motorrad befestigen – siehe Abbildung 1 – und entfernen Sie das Verkleidungsteil vom Motorrad.
- Danach muss das obere Verkleidungsteil entfernt werden, indem Sie die 2 x Inbusschrauben von den oberen und unteren Halterungen entfernen (siehe Abbildungen 2 und 3).
- Das Verkleidungsteil von den 2 Gummitüllen vorne/oben und hinten/unten lösen, und vorsichtig vom Motorrad entfernen (siehe Abbildung 4).

**GSX-R Modelle**

- Um die Motorgehäuse-Abdeckung montieren zu können, muss die linke Seitenverkleidung entfernt werden.
- Entfernen Sie die Schraube und Plastiknieten, die in den Abbildungen 5, 6, 7, 8, 9, 10, 11, 12, 13, 14, 15 gekennzeichnet sind.
- Die linke Seitenverkleidung vorsichtig entfernen und die Steckverbinder für die Blinker entfernen (siehe Abbildung 16).

**Beide Modelle**

- Nachdem die Verkleidung entfernt ist, sehen Sie die schwarze Rahmenverkleidung. Lösen Sie die Rahmenverkleidung, indem Sie die mittlere und untere Schraube entfernen (siehe Abbildung 17). Das Verkleidungsteil kann nun etwas vom Motorrad weggezogen werden, um somit die Motorgehäuse-Abdeckung zu montieren.

R&amp;G

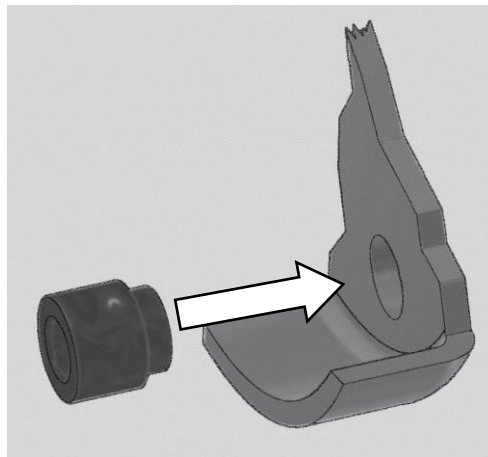
Unit 1, Shelley's Lane, East Worldham, Alton, Hampshire, GU34 3AQ

Tel: +44 (0)1420 89007 Fax: +44 (0)1420 87301 [www.rg-racing.com](http://www.rg-racing.com) Email: [info@rg-racing.com](mailto:info@rg-racing.com)



### Montage

- Um die Motorgehäuse-Abdeckung montieren zu können, nehmen Sie die 3 x S0820 Distanzhalter (Artikel 6) und setzen Sie sie in die 3 Öffnungen hinten an der Abdeckung ein (siehe Abbildung 18). Diese können Sie mit einem Schonhammer in Position bringen. Bitte stellen Sie sicher, dass sie richtig in Position sind, bevor Sie die Montage fortsetzen.



- Entfernen Sie die drei Schrauben, die in Abbildung 19 gekennzeichnet sind. Die obere Schraube ist hinter der Rahmenverkleidung positioniert – diese kann vom Motorrad weggezogen werden, um den Zugang zu ermöglichen.
- Die R&G Motorgehäuse-Abdeckung kann nun montiert werden. Mit dem Motor ausrichten und anbringen (eventuell mit einem Schonhammer oder der Handinnenfläche vorsichtig eindrücken).
- Die Abdeckung mit den 3 x Inbusschrauben (Artikel 2) und M6 Unterlegscheiben (Artikel 7) lose fixieren am Motorrad (siehe Abbildung.20).
- Benutzen Sie einen Drehmomentschlüssel, der auf 10 N/m (7 Lb/ft) eingestellt ist, um die Schrauben festzuziehen.
- Den Distanzhalter S0779 hinter dem Kunststoff in der Halterung anbringen, um zu verhindern, dass das untere Verkleidungsteil die Motorgehäuse-Abdeckung berührt – siehe Abbildung 21.
- Den Distanzhalter mit der 35mm Inbusschraube (Artikel 3) und 19mm Unterlegscheibe (Artikel 4) befestigen wie in Abbildung 22 abgebildet.
- Die Verkleidungen können nun wieder am Motorrad montiert werden.
- Stellen Sie sicher, dass alle Verkleidungen ordnungsgemäß befestigt sind, und dass alle Schrauben mit dem empfohlenen Anzugsdrehmoment festgezogen wurden, bevor Sie mit dem Motorrad fahren.
- Es wird empfohlen, die Festigkeit der Schrauben in regelmäßigen Abständen (einmal im Monat) zu kontrollieren.
- HINWEIS: Bei der Reinigung dieses Produkts benutzen Sie nur ein weiches Poliertuch und ein mildes Putzmittel.
- VERMEIDEN SIE SCHÄDLICHE CHEMIKALIEN. IM ZWEIFELSFALL NICHT BENUTZEN, DA SIE DIE FESTIGKEIT DER ABDECKUNG VERÄNDERN KÖNNEN.
- R&G übernimmt keine Haftung, wenn die obengenannten Schritte nicht eingehalten werden oder die angegebenen Anzugsdrehmomente nicht angewendet werden.

AUSGABE 1 29/10/2018 (DM)

R&G

Unit 1, Shelley's Lane, East Worldham, Alton, Hampshire, GU34 3AQ

Tel: +44 (0)1420 89007 Fax: +44 (0)1420 87301 [www.rg-racing.com](http://www.rg-racing.com) Email: [info@rg-racing.com](mailto:info@rg-racing.com)

**CONSUMER NOTICE**

The catalogue description and any exhibition of samples are only broad indications of the Products and R&G may make design changes which do not diminish their performance or visual appeal and supplying them in such state shall conform to the order. The Buyer acknowledges no representation or warranty (other than as to title) has been given or will apply to the Products other than those in R&G's order or confirmation and the Buyer confirms it has chosen the Products as being of merchantable quality and suitable for its particular purposes. Where R&G fits the Products or undertakes other services it shall exercise reasonable skill and care and rectify any fault free of charge unless the workmanship has been disturbed. The Buyer is responsible for ensuring that the warranty on the motorcycle is not affected by the fitting of the Products. On return of any defective Products R&G shall at its option either supply a replacement or refund the purchase money but shall not be liable if the Products have been modified or used or maintained otherwise than in accordance with R&G's or manufacturer's instructions and good engineering practice or if the defect arises from accident or neglect. Other than identified above and subject to R&G not limiting its liability for causing death and personal injury, it shall not be liable for indirect or consequential loss and otherwise its liability shall be limited to the amounts paid by the Buyer for the Products or the fitting or service concerned. These terms do not affect the Buyer's statutory rights.

**R&G RETURNS POLICY (NON-FAULTY GOODS)**

Returns must be pre-authorized (if not pre-authorized the return will be rejected). Goods may only be returned direct to us if they were purchased direct from us (customer must prove if necessary). Otherwise to be returned to original vendor. Goods must be in re-sellable condition, in the opinion of R&G. All returns are subject to a 25% restocking and handling fee (25% of the gross value exc. P&P – at the prevailing price at time of purchase). The customer must pay any and all carriage charges. No returns of discontinued products, unless within 14 days of purchase. This policy does not affect your statutory rights and does not refer to faulty goods.

R&amp;G

Unit 1, Shelley's Lane, East Worldham, Alton, Hampshire, GU34 3AQ

Tel: +44 (0)1420 89007 Fax: +44 (0)1420 87301 [www.rg-racing.com](http://www.rg-racing.com) Email: [info@rg-racing.com](mailto:info@rg-racing.com)